

TAIWAN

Muslim Friendly
Leisure Farms

TAIWAN

Muslim Friendly
Leisure Farms



Taiwan Leisure Farms Development Association

The Taiwan Leisure Farms Development Association was founded in 1998 as a non-profit organization under the Civil Organizations Act. It aims to develop leisure agriculture and rural tourism in Taiwan and has nearly 200 member farms. It has also been supported by officers from the Council of Agriculture under the Executive Yuan, scholars, and other business owners. Our mission is to bring the academia, the government, and the industry together for a better future of leisure agriculture and rural tourism.

The TLFDA Secretariat is dedicated to helping our members provide high quality services, cultivate cultural charm, and establish brand images. To promote such "quality, taste and brand image," four divisions are set at the TLFDA:

1. Administration : This division is in charge of secretariat management. It is also the division that set up the www.taiwanfarm.org.tw website to promote the exchange and passing-down of insider knowledge.
2. Human resource development : The division' s missions include setting up the Taiwan Leisure Agriculture Institute, promoting the Leisure Farm Manager Certification, and cultivating managerial talents for the industry.
3. Industry development : This division is responsible for studying related laws, promoting the Leisure Farm Service Rating System , and establishing a reliable, high-end industry image.
4. Farm marketing : The division is dedicated to the research and development of new products, attracting more international clients, and promoting tourism in Taiwan across the globe from a globalizing point of view.

In addition to boosting agricultural economy, the TLFDA sees itself as the promoter of public environmental education. It aims to bring social stability and sustainable agricultural development to rural areas as a way to give back to society. The TLFDA secretariat believes that "70% of the effort made for sustaining the present, and the other 30% is for creating a better future." By passing down old-time wisdom, sharing insider knowledge, and spreading the power of love, the TLFDA hopes to make agricultural villages in Taiwan wonderful tourist destinations and great living environments. Not only elder farmers can find their worth, youngsters can also come home to make a good living. In continuing the village culture, everyone can "enjoy a leisurely life while immersing in happiness."



Appreciate at Ease

Our leisure farm harnesses the original resources of idyllic sceneries and natural ecology and environment, to make you feel totally free and relaxed in admiring the beauty of Taiwanese recreational farm.



Relish with Reason

We use regional (low mileage), seasonal, and organic fresh ingredients to cook our savory dishes with a "simple" culinary method of light oil, light salt, and reduced sugar. You do not have to worry about or troubled by the heavy burdens of those extra calories.



Purchase with Relief

The master of the farm combines the concept of health preservation with self-produced, seasonal and fresh ingredients into developing creative agricultural specialties, so as to offer you a sense of comfort in buying any of our products.



Play with Knowledgeable Savvy

Some of our farm activities include taking the visitors to mountain forests for wild herbs plucking, to stream beds or brook shores for fish and shrimps catching, and guiding them to several night tours in the fields for finding and discovering the frog families and fireflies. The purpose is to bring you closer to the great nature where you can learn some useful lessons and general wisdoms about our Mother earth.



Lodge with a Sense of Taste

Surrounded by the great nature, our leisure farm is constructed by local natural building materials. Through associating with the nearby geographical landscapes, the farm has demonstrated in itself a plain and pure atmosphere of a green-life savor.

MUSLIM FRIENDLY LEISURE FARMS

Farm's Accommodation & Must-try Food

- A** Shangrila Leisure Farm _____ P1
- B** Toucheng Leisure Farm _____ P5
- C** ZhuoYe Cottage Farm _____ P9
- D** TaiYi Ecological Leisure Farm _____ P13
- E** Long Yun Leisure Farm _____ P17
- F** Tsou Ma Lai Leisure Farm _____ P21
- G** Flying Cow Ranch _____ P25
- H** Fairy Story Village Organic Farm B&B _____ P29
- I** M&G Family Leisure Farm _____ P33
- J** Fairy Lake Leisure Farm _____ P37
- K** Meihua Lake Leisure Farm _____ P41
- L** Li Chuan Aqua Farm _____ P45
- M** Rain Frog eco-organic Farm _____ P49

Farm's Product

- 1** Jiaxian Farmer's Association _____ P52
- 2** Grand Blossom Grange Alian District Farmer's _____ P53
- 3** Association of Kaohsiung City _____ P55
- 4** Lin Wang Tea Farm _____ P57
- 5** Naturalism Farm _____ P58



Farm's Accommodation & Must-try Food





Shangrila Leisure Farm

-  +886-3-951-1456
-  No.168, Meishan Rd., Dajing Village,
Dongshan Township, Yilan County
-  www.shangrilas.com.tw

Located at 250 meters above sea level on Dayuan mountains, the farm is surrounded by green with a panoramic view and rich ecological resources. Primitive frogs and butterfly can be found in our farm. You would be able to participate in various activities such as playing gyroscope, releasing sky lanterns, DIY sessions and much more.

Yilan terletak di bagian timur laut Taiwan, yang berada di pegunungan dan laut, dan kami berada di Gunung Dayuan, sebuah cabang Pegunungan Salju Yilan. Memiliki ketinggian 250 meter di atas permukaan laut, dikelilingi oleh pegunungan hijau, dan menghadap ke Dataran Lanyang. Kaya akan sumber daya ekologi, kodok pohon Mohs dari daun hijau mimikri, kodok merah dari daun mati, kodok merah Swarth, spesies kupu-kupu unik Taiwan, kupu-kupu, dan ngengat di taman yang akan sering ditemui Anda. Kami bangga dengan pelestarian budaya tradisional Taiwan, onde-onde ketan, gangsing dan lentera, serta semua jenis aktivitas anak-anak yang menunggu Anda, ada makanan, inap, main.



Must-try Food Makanan Harus Coba

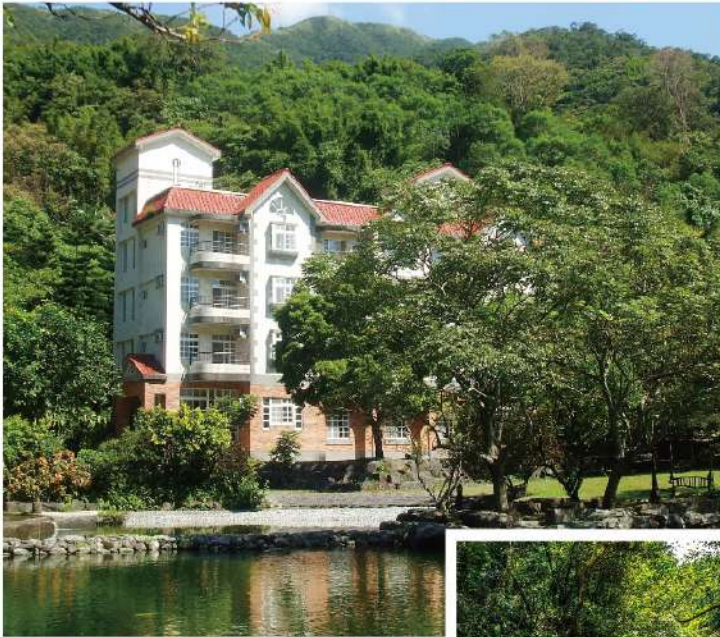
Spicy Shrimp Sauteed with Fried Garlic

By using Non-Toxic shrimp, stir-fried with chili, garlic and local spices into a delicious and unforgettable cuisine.

Udang pedas Tumis dengan Bawang Putih Goreng

Menggunakan udang yang tidak beracun, bawang putih, cabai, digoreng menjadi harum, lezat yang tak terlupakan, membuat orang meninggalkan kesan mendalam.





Toucheng Leisure Farm

 +886-3-977-2222
 No.125 Gongxin Rd., Toucheng
 Township, Yilan County
 www.tofarm.com.tw



Toucheng Leisure Farm mencakup area seluas sekitar 120 hektar, dengan pemandangan alam yang beragam dan sumber daya ekologis yang kaya. Ada kamar yang nyaman, ruang pertemuan multifungsi, restoran, ruang kelas terbuka, hutan bambu organik, kebun sayur organik, dan kebun buah. Juga merupakan fasilitas pendidikan lingkungan. Program kelas pendidikan pertanian, kelas eksplorasi dan pengalaman serta pendidikan budidaya lacquer termasuk yang populer.



Covering 120 hectares of land, the Toucheng Leisure Farm is characterized by biodiversity and rich natural resources. The farm is equipped with comfy guest rooms, multi-functional conference rooms, a restaurant, an outdoor educational center, an organic Makino bamboo forest, an organic vegetables garden and a fruit tree zone. The farm's food and farming class, field trip and ecological mountain workshop are highly popular.



Must-try Food Makanan Harus Coba

Seafood Salad

The fresh seafood from Pacific Ocean, contain refreshing taste, stir with special spices, provide rich layers of flavor with sweet, sour and spicy!

Salad Seafood

Makanan laut dari Samudera Pasifik ini memiliki rasa yang menyegarkan, memberikan rasa yang kaya, sedikit asam, sedikit manis dan sedikit pedas, hanya satu gigitan sudah dapat memancing selera Anda.





ZhuoYe Cottage Farm berpusat pada produksi pertanian, ekologi pedesaan dan kehidupan petani. Ia memiliki desain ruang kamar bergaya Taiwan murni dengan pemandangan gunung, masakan vegetarian yang sehat dan kreatif, serta kerajinan tradisional turun temurun yang telah lebih dari 2000 tahun - pewarnaan biru, dibuat sendiri atau dijadikan sebagai cinderamata, jika ingin menikmati waktu santai maka datanglah ke ZhuoYe Cottage Farm.



ZhuoYe Cottage Farm

-  +886-3-787-9198
-  No. 1-9, Bongshanxia, Shuangtan Village, Sanyi Township, Miaoli County.
-  www.joye.com.tw



Zhuo Ye Cottage has a strong spirit of agriculture. It aims to show its production, ecology and lifestyle at once. Visitors can join a "Indigo dye" workshop or purchase the dyes at the gift shop. The cottage team takes pride in their Taiwanese-style guest rooms with beautiful mountain views and specially designed vegetarian health cuisine. Crave for some laidback hours? Come to Zhuo Ye!



Must-try Food Makanan Harus Coba

Hakka's Mini-Burger

The combination of crispy pastry, artemisia bun and peach leaf, by using traditional ingredients and modern cooking way, it produce a Hakka's Mini-Burger.

Burger Mini Hakka

Menggabungkan kulit ronyah yang lezat dengan bakpao daun hijau Hakka, dengan daun persik sebagai alas, jadilah Burger Mini Hakka, memiliki rasa tersendiri yang khas dan unik.





TaiYi Ecological Leisure Farm

+886-49-299-7848

No.176 Jhungshan Rd.1st Section,
Puli Township, Nantou County.

www.taiifarm.com



Tai-Yi Ecological Leisure Farm situated in Puli, Nantou, centre of Taiwan. Surrounding by Sun Moon Lake and He Huan Mountain; with the 13.2 hectares of garden land. Provide total of 104 unit 4 star guest rooms such as farmstay, homestay and resort hotel. The Theme park garden area including Flora Temple, Rainforest museum, and Green land plaza, Visitors may feel in four season flower world taste flora meal wine and hot spring. Attach with 3D green glass house visitor able to experience pick fresh vegetable and fruits in difference seasons.

TaiYi Ecological Leisure Farm dengan rekreasi ekowisata dan energi hijau bunga bintang empat terletak di tengah Taiwan, Nantou Puli, bersebelahan dengan Gunung Hehuan di Danau Sun Moon. Tempat ini mencakup luas 13,2 ribu hektar taman hijau. Di dalamnya memiliki 104 kamar, menyediakan farmstay, homestay dan hotel resor. Taman hiburan memiliki Kuil Huashen, Rainforest Style Hall, Greenery Square dan tempat-tempat indah serta bangunan hijau lainnya. Membuat pengunjung bagaikan berada di dalam dunia floral empat musim, mencicipi kuliner bunga, minuman bunga dan berendam spa bunga. Selain itu juga terdapat rumah kaca tiga dimensi untuk memetik buah dan sayuran, agar pengunjung dapat memetik buah dan sayur serta merasakan kehidupan petani buah di musim apapun ketika datang.



Must-try Food Makanan Harus Coba

Flower's Hand-roll

By using seasonal flower and seaweed to provide you an organic, healthy and detoxificate hand-roll.

Roll bunga

"Bahan roll bunga berbeda-beda sesuai musim, dibentuk menjadi gulungan tangan. Keistimewaan roll ini adalah membersihkan liver, mendetoksifikasi tubuh Anda, tidak hanya memuaskan nafsu makan Anda tapi juga membuat Anda sehat.





Long Yun Leisure Farm terletak di dalam hutan dan dikelilingi oleh awan kabut yang indah. Adalah resor musim panas yang terbaik. Ketika berjalan di dalam hutan, selain dapat melihat pemandangan alam yang indah, Fluorida dan Anion yang berlimpah membuat kita menikmati anugerah alam ketika bernapas, sementara itu Leisure Farm juga menyediakan sayuran organik yang ditanam sendiri untuk dinikmati pengunjung, beragam ekologis pada malam hari memberikan kejutan yang tak terbayang!



Long Yun Leisure Farm

-  +886-5-256-2216
-  No.1 ShiJhuao, Jhunghe Village,
Jhuochi Township, Chiayi County.
-  www.long-yun.com.tw



Longyun Leisure Farm is surrounded by forest trees and mists and clouds. This beautiful farm is a great place for spending your summer vacation. Stroll along its forest trails to appreciate nature's beauty and immerse in pythocidere and ionizers which are good for your health. Farm-grown organic vegetables, which exude the taste of happiness, are served. The farm at night is full of surprises. Stay on to explore the nature by then!



Must-try Food Makanan Harus Coba

Spiced chicken with chili

The fresh seafood from Pacific Ocean, contain refreshing taste, stir with special spices, provide rich layers of flavor with sweet, sour and spicy!

Ayam bumbu cabai

Makanan laut dari Samudera Pasifik ini memiliki rasa yang menyegarkan, memberikan rasa yang kaya, sedikit asam, sedikit manis dan sedikit pedas, hanya satu gigitan sudah dapat memancing selera Anda.





Tsou Ma Lai Leisure Farm

- +886-6-576-0121
- No.60, Qiziwa, Danei District,
Tainan City
- www.farm.com.tw



Located in the Danei District, Tainan City, lush green Tsou Ma Lai Farm covers 120 hectares of land and provides comprehensive services that are sure to amaze its guests. More than 30 sports and leisure facilities are available in the farm, in addition to guest rooms, conference halls, camp sites, a performance center and a restaurant. This is a great place for children to take their outdoor educational trips, and for adults to appreciate nature and spend some leisurely time. Besides, the farm restaurant obtain Muslim Friendly Certificate, provide various halal food for muslim friends as well. If you feel like spending a relaxing holiday, visit the Tsou Ma Lai Farm.

Terletak di Distrik Tainei, Kota Tainan, mencakup area seluas 120 hektar dan menyediakan ruang hijau terpadu. Fasilitas meliputi akomodasi, kemah, konferensi, pertunjukan, catering, dan lebih dari 30 kegiatan olahraga dan rekreasi lain. Terlebih lagi juga merupakan kelas luar ruang untuk pendidikan lingkungan, wisata alam, serta tempat rileks terbaik! Diantaranya adalah "Restoran Mu-ye" menyediakan kuliner yang bersertifikasi HALAL seperti mie daging sapi, salad seafood ala Thailand, roti India dan makanan Muslim lainnya! Ingin bersantai, silahkan datang ke Tsou Ma Lai Leisure Fam."



Must-try Food Makanan Harus Coba

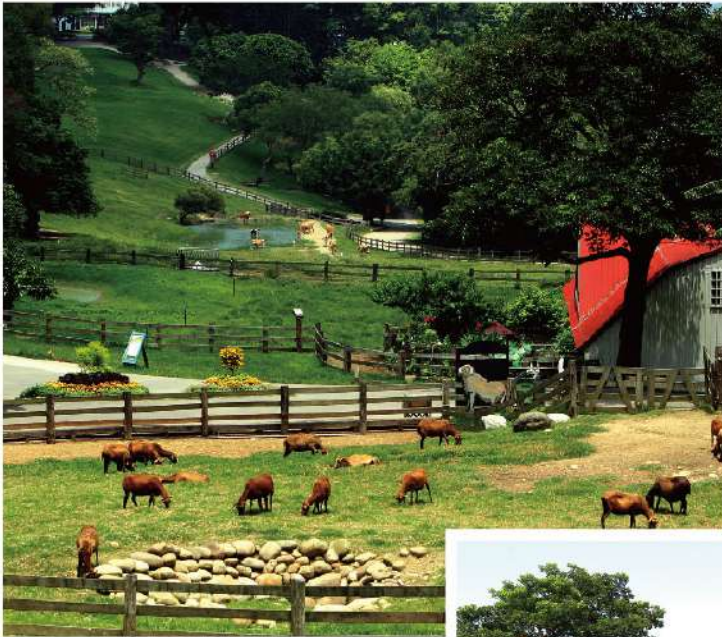
Pasture Noodle with Curry Beef

Tsou Ma Lai Farm mainly produce pasture, they used it to produce a healthy noodle and mix with juicy curry beef, become a delicious farm cuisine.

Mi kari sapi rumput

Mi sehat ini dibuat dengan menggunakan rumput yang ditanam di dalam peternakan, dipadu dengan kari sapi yang juicy, membuat Anda ingin langsung menyantapnya!





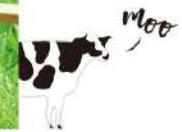
Flying Cow Ranch

-  +886-37-782-999
-  166, Nanho Village, Tongsiao,
Miaoli County
-  www.flyingcow.com.tw

The Flying Cow Ranch is divided into six thematic zones. There are four types of cuisine and two kinds of accommodation to choose from. This is family visitors' favorite vacation site and companies' best conference place. The ranch offers a variety of DIY sessions and an "animal zone" for kids. Children are free to milk the cows, feed calves, or watch ducks walk like paraders. Farm-made dairy products like milk candies, ice cream and pudding, as well as a thousand kinds of souvenirs, are available for purchase in the shopping area. Remember to bring some gifts home!

Flying Cow Ranch mempunyai enam zona ekologi bertema, empat restoran dan dua gaya akomodasi.

Ia menyediakan tempat pendidikan, taman rekreasi, dan aktiviti DIY yang menarik untuk turis. Taman peternakan juga bisa untuk interaksi dengan binatangnya, aktiviti memberi makanan untuk anak sapi, pemerah susu sapi, parade bebek dan sebagainya adalah dijadwalkan gratis. Selain itu, Flying Cow Ranch juga menawarkan produk susu buatan sendiri, seperti espresso milk, es krim, puding, dan souvenir peternakan, anda dapat membawanya pulang bersama.



Must-try Food Makanan Harus Coba

Fresh Milk Hotpot

Flying Cow Ranch produce tons of fresh milk everyday in the farm, you must try the freshy milk hotpot with self-plant organic vegetable! Fresh vegetable makes the milk taste richer! I'm sure you'll fall in love with it!

Hotpot susu segar

Flying Cow Ranch hasilkan susu segar di peternakannya setiap hari, menggunakan susu segar jadi basis hotpot, and mesti coba sayuran organik yang ditanam di peternakan, ia biarkan rasa sup susu jadi enak banget! anda mesti sukainya!





Fairy Story Village Organic Farm B&B

+886-3-961-3385
 300 Meihua Rd, Guangxing Village,
 Dongshan Township, Yilan County
www.s888.tw



Fairy Tales Village Farm B&B is close to the Luodong Nightmarket, the Plum Flower Lake, and the sites of the Yilan International Children's Folklore & Folkgame Festival and Yilan Green Expo. Come and stay with Fairy Tales Village to pick mulberries and be a "tree doctor" in March and April, harvest rice in early July, watch sun flowers from May to July, catch rhinoceros beetles in June, appreciate roselle blossoms between August and November, and pick oliver-shaped kumquats from December until the next year in February. We offer a combination of B&B and day trips. We help you try harvesting, drying and milling rice, or make edible mulberry or roselle enzymes, green onion cakes or vanilla cookies. You may even feed young fish, take pictures with fairy tale dwarfs, play a labyrinth game, learn the world of silkworms, catch fish, shrimps and oysters, or let gambusia mosquito fish eat away your dead foot skin. This travel package also includes a free organic fruit drink. Finally, don't forget to try the farm's signature organic seafood and meat hot pot and mulberry ramen.

Fairy Tales Village Farm B&B terletak di Dong Shan, dekat Luodong Night Market dan Danau Meihua. ia menyediakan aktiviti empat musim, bulan Maret dan April dapat petik mulberry, memotong padi di awal Juli, musim bunga bunga matahari di bulan Mei-Juli, Agustus hingga November musim rosella, Desember-Februari adalah musim kumquat. Fairy Tales Village Farm juga menyediakan akomodasi dan aktiviti yang menarik seperti pemotongan padi, pengeringan beras, penggilingan padi, DIY enzim bunga mulberry, kue bawang hijau DIY dan sebagainya. Jangan lupa coba organik hotpot dengan mie mulberry yang enak sekali!



Must-try Food Makanan Harus Coba

Organic Hotpot with mulberry noodle

By using Mulberry leave and pumpkin to produce the soup, mix with self-planted organic vegetable and fresh sea bass, it tasted healthy and low calories! Don't forget to try the mulberry noodle, it taste sweet and yummy, really match with the organic hotpot!

Organik Hotpot dengan mie mulberry

Soup organik mendidihnya dengan daun mulberry dan labu, makanlah bersama sayuran organik yang ditanam di ladang dan ikan kakap segar, rasanya enak dan tidak berbebani. Jangan lupa cubo Mie mulberry, rasanya manis dan asin, dan ini cocok sekali dengan organik hotpotnya!





M&G Family Leisure Farm

+886-905-169-176
 No. 99, Ln. 43, Pingjing St., Pingdeng
 Vil., Shilin Dist., Taipei City



M&G Family Leisure Farm is a new concealed place in Mt. Yang-Ming where you may bath in phytoncide and feel the natural atmosphere. The natural ecological field guides everyone to experience the life of a food farmer in hope that the goal of "Comprehensive friendliness to environment of spirit, body, and the earth" can be achieved.

M&G's vegetarian potheb hot pot plus exclusively innovative appetizers and fruit-and-veg dressings have gained constant praises from epicures.

In the farm, you may look at Taipei Basin from a distance. The footpath within is afforested by plum blossoms, purple vines, bee plants, vanillas, tortoise-shell bamboos, oriental cherries, weeping cherries, fruits, and vegetables as a courtesy to the earth.

M&G Family Leisure Farm terletak di lingkungan rahasia bukit Yangming. Kami menggunakan bidang ekologis alami untuk memimpin turis untuk mengalami kehidupan para petani, dan berusaha untuk mencapai tujuan "perlindungan lingkungan dari pikiran, tubuh dan bumi". Sayuran dan hotpot Kami memang enak, makan bersama dengan makanan pembuka kreatif yang eksklusif dan saus spesial. Farm kami menghadap ke Taipei, bunga plum, sakura, buah-buahan, sayuran di taman mengilhami rasa syukur kepada bumi.



Must-try Food Makanan Harus Coba

Curry Set

Curry set is one of the muslim friendly meal in the farm, it produce by self-planted vegetable and fruit, dip with the special sauce, it's tasty and healthy.

Kari spesial

kari Spesial adalah salah satu makanan Muslim, bahan karinya adalah halal, bahan dan sayur-sayuran yang digunakan adalah dari pertanian sendiri, makan bersama dengan saus yang dihasilkan oleh buah-buahan, rasa enak and sehat sekali.





Fairy Lake Leisure Farm

+886-6-686-3635

No.6-2, Nanshi Sunghe Laoliao 1st Lin,
Dongshan District, Tainan City

www.senwho.com



The center of the 52-hectare farm is an independent peak. Clouds surrounding the peak in the morning, dusk and after rain, looks like an island in a lake, hence the nickname: Lake of Heaven. We practice farming and co-exist here, Litchi \ Longan \ Ponkan \ Orange \ Coffeeseasonal farming keeps passing down and evolving under the instance. In Lake of Heaven, we experience happiness in the farm life.

Farm ini terletak di Tainan, daerah Dongshan. Pusat pertanian seluas 52 hektar ini adalah sebuah bukit mandiri. Karena lautan awan muncul setelah hujan, jadi bukit terlihat seperti pulau kecil di danau, inilah nama Fairy Lake Leisure Farm wujudnya. Di sini kita mempraktekkan kehidupan bertani dan bisa dapat pertanian Lychee, lengkeng, jeruk dan kopi. Marilah Fairy Lake Leisure Farm mengalami kehidupan pertanian yang penuh bahagia.



Must-try Food Makanan Harus Coba

Longan Milk Coffee

Dong Shan district produce Longan and Coffee bean, Fairy Lake Leisure Farm using own produce dried longan and coffee bean to make this special recipe. You can taste the bitter coffee flavor meanwhile the dried longan giving you the sweetness taste.

Kopi Susu Lengkeng

Dongshan adalah tempat di mana lengkeng dan kopi diproduksi, Fairy Lake Leisure Farm menggunakan lengkeng kering yang dibuat sendiri dan kopi Dongshan untuk menghasilkan Kopi susu Lengkeng yang lezat, Anda dapat merasakan kegetiran unik dari kopi Dongshan, sementara lengkeng manis yang kering berikan rasa manis yang enak!





Meihua Lake Leisure Farm

 +886-3-961-2888
 No.62, Huanhu Rd., Dongshan
 Township, Yilan County
 www.9612888.com.tw



The farm covers an area of 5 hectares near Meihua Lake Scenic Area. The farm features nature, environmental protection, and health as the theme, providing accommodation, dining, camping, and other activities. You will hear insects and birds, and see flowers and trees when strolling down the farm. The farm facilities include holiday cottage, non-toxic orchards, paintball field and much more. It is a great place for family vacation.

Meihua Lake Leisure Farm bersebelahan dengan Area Pemandangan Danau Meihua dan pemandangan pegunungan. Tema farm ini adalah berdasarkan pada alam, perlindungan lingkungan dan kesehatan. Fasilitasnya meliputi kabin, kebun sayuran yang tidak beracun, padang paintball, taman kumbang dan sebagainya. Ia juga menyediakan akomodasi, restoran, berkemah dan aktiviti DIY untuk pengunjung.



Must-try Food Makanan Harus Coba

Nan-Fang-Ao Grilled Fish with Curry Beef

Using the fresh Mackerel from Yilan grilled with special ingredients, match with self-planted organic vegetable and curry beef, taste good and healthy.

Ikan Kembung Bakar Nan-Fang-Ao Dengan Kari Sapi

Gunakan ikan kembung dari Yilan bakar dengan rempah spesial dari farm sendiri, makan bersama kari sapi dan sayur-sayuran organik, rasa enak dan sehat.





Li Chuan Aqua Farm

+886-3-865-1333

No.45, Yuchi, Shoufeng Township,

Hualien County

www.lichuan.tw



Li Chuan Aqua Farm - The homeland of Golden Clam

Located in between the natural center range and coastal range of Taiwan. Due to less population thus no pollution founded in the farm. The water vapor from the pacific ocean turn into rain when pass through the center range, and the underground water also founded in this area, so there are various river occurred. Due to the rich and clean water supply, the farmers develop a world class fresh fountain water cultivation area. Li Chuan Aqua Farm able to produce high quality Golden clam with this superiority.

Li Chuan Aqua Farm is a leisure farm, which visitor can experience the clam finding activity in the fresh water. Do not miss the chance to try the best Golden Clam in the farm restaurant, the chef using the simple and local taiwanese way to cook and present the original taste of Golden Clam. Nevertheless, you also can purchase the clam essence and related product for your own consume or as the gift for your loves one!

Li Chuan Aqua Farm - Kampung Kerang Emas terletak di antara Pegunungan Tengah dan Pegunungan Pesisir di Timur Taiwan, ini adalah satu daerah lembah terbuka yang unik di Taiwan. Populasi di daerah ini kecil, murni dan bebas polusi. Uap air di sisi timur Samudra Pasifik bertiup sepanjang tahun. Apabila melalui pegunungan pusat, ia akan menjadi hujan dan berkumpul, dan air tanah di timur Taiwan juga bisa dapat di tempat ini, jadi banyak sungai dapat jumpa disini. Para nelayan membangun kolam pemuliaan kelas bintang lima di dunia. Li Chuan Aqua Farm gunakan air segar ini membina Korang Emas yang mahir.



Li Chuan Aqua Farm adalah pertanian rekreasi, pengunjung dapat mengalami aktivitas mencari kerang di dalam kolamnya.

Jangan ketinggalan kesempatan untuk mencoba kerang emas terbaik di restorannya, koki menggunakan cara taiwan untuk memasak dan menyajikan rasa asli dari kerang emas. Namun demikian, anda juga dapat membeli esensi kerang dan produk terkait untuk konsumsi sendiri atau sebagai hadiah untuk kekasih Anda!"



Must-try Food Makanan Harus Coba

Li Chuan Clam

Using the fresh fountain water to raise the high quality Golden Clam, all the clam is huge and juicy. Cook with chilis, garlic and basil, it tasted spicy, delicious and make you can't stop eating! The best Golden Clam only in Li Chuan Aqua Farm.

Kerang Li Chuan

Kerang Emas dibudidayakan dengan air segar di Li Chuan, ia berwarna keemasan dan dagingnya manis. Ia digoreng dengan cabe, bawang putih dan kemangi, rasa enak sekali dan tidak dapat dihentikan makannya. Kerang Emas terbaik hanya di Li Chuan Aqua Farm.





Rain Frog Eco-organic Farm

+886-3-865-2636
 No. 36, Yutang Road, Fengshan Village,
 Shoufeng Township, Hualien County
www.daai.com.tw



There is an ecological environment and plenty of experience activities, enabling you to enjoy the fun of lotus picking, make organic lotus tea, challenge to catch evil, and feel the fast changing stimuli and seesaw pleasure. Here, you can enjoy the rural scenery of nature, watch wild birds and rich landscape ecology.

Exciting ecological observation at night stimulates children's observation. Rather than reading a lot of books, it is better to have an ecological tour to Rain Frog eco-organic Farm.

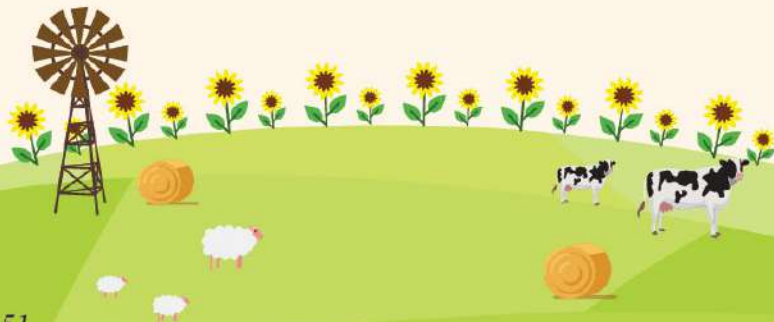
Farm ini mempunyai lingkungan ekologi yang kaya, aktivitas DIY, anda bisa menikmati kesenangan memanen bunga lotus, dan membuat teh teratai organik.

Anda bisa nikmati pemandangan alam yang indah, ekologi burung dan lanskap liar yang kaya. Aktiviti pengamatan ekologi malam bisa menginspirasi pengamatan kanak-kanak. Marilah Rain Frog eco-organic Farm untuk mengalami pengalaman yang luar biasa!





Farm's
Product



Jiaxian Farmer's Association

+886-7-675-1001 • 07-6754123

No.26, Zhongzheng Rd., Jiaxian Dist., Kaohsiung City 847, Taiwan (R.O.C.)

www.jxfa.org.tw



Chu Yun Mei-Gin Tabiet

90 g / Box • NTD 1000



Organic plum Japanese Dressing
Organic Plum Extract Soy Sauce

210cc / Bottle • NTD 680



Chu Yun Mei-Gin Candy

80g / Package • NTD 80



Chu Yun 40x Highly Concentrate
Organic Mei-Gin

60g/Box • NTD 800

Made from the selective organic green plums that have been simmered for 72 hours, this healthy and regimen "Mei-Gin" is the most representative food product of our company. Researched and developed by making use of the diverse savors of green plums at different maturity levels, "Happy Kitchen Sauce Collection" is an item of exceptional taste that makes cooking easier and simpler. It is an essential sauce that you must have in your kitchen.

"Esens plum" makanan sehat yang dimasak dari plum hijau organik terpilih selama 72 jam dengan api kecil, adalah produk perusahaan kami yang sangat representatif, memanfaatkan tingkat kematangan berbeda pada plum hijau menghasilkan "Paket Saos Dapur Bahagia" yang diteliti dan dikembangkan dengan rasa berbeda, rasa yang spesial membuat memasak lebih mudah dan santai, adalah bahan saos yang sangat diperlukan di dapur.

Grand Blossom Grange



+886-8-739-6588

No.15, Sec. 1, Jiuru Rd., Jiuru Township, Pingtung County 904, Taiwan (R.O.C.)

www.rosebox.com.tw

twrosebox@gmail.com



Rose Hydrolat NTD 780

Originating from Grand Blossom Grange, the firm which specializes in planting edible roses in southern Taiwan, Rose Hydrolat is made from fresh roses picked on the day by means of ancient distillation and extraction method. The item involves neither chemical ingredients nor preservative and grain alcohol that it is suitable for drinking or facial skin care. Containing high-volume rose essential oil, polyphenol and flavonoid whose ingredients can improve skin hydration and suppress the generation of tyrosinase, Rose Hydrolat is a sacred product for maintaining beauty and healthy skin.

Pertanian Dahua dari selatan Taiwan menghususkan diri dalam menanamkan mawar yang dapat dimakan, hidrolat mawar diekstraksi dengan cara distilasi kuno dari mawar segar yang dipetik pada hari itu, sepenuhnya tanpa bahan aditif kimia, tidak menambah bahan pengawet, alkohol, cocok untuk diminum atau perawatan kulit wajah. Di dalam hidrolat mengandung minyak esensial mawar yang banyak, polifenol dan bahan flavonoid yang bisa membantu meningkatkan kelembapan kulit serta bisa menghambat produksi tirosinase, merupakan produk keindahan dan kecantikan untuk menjaga kesehatan kulit.



Dried Rose NTD 460

Made from the strictly-selected edible rose petals via gentle-low tumble dry, Dried Rose keeps the most complete nutritious ingredients including rich polyphenol, flavonoid, anthocyanin, vitamins, rose tannin, and poly-saccharides. Dried rose petals can be utilized in brewing tea, stewing soup, or making cake and bread.

Pilihan ketat dibuat dari kelopak mawar yang dapat dimakan, melalui pengeringan pada suhu rendah. Mempertahankan nutrisi paling lengkap -- mengandung polifenol, flavonoid, anthocyanin, vitamin, tannin mawar, polisakarida dan bahan lainnya. Kelopak yang dikeringkan bisa diaplikasikan dalam penyeduhan teh, rebusan sup, cake, roti dan produk lainnya.

Rose Jam NTD 350



Our rose jam is made from Grand Blossom Grange' s strictly-selected edible rose petals and apple, lemon juice, granulated sugar by the adoption of decoction method, through which the bitterness of the petals are transformed into enticing aroma and sweet aftertaste.

Terbuat dari kelopak bunga mawar segar yang dapat dimakan Pertanian Dahua serta apel, jus lemon, gula pasir, dimatangkan dalam waktu tertentu, supaya rasa pahit kelopak bunga mawar berubah menjadi wangi yang memikat dan rasa manis.



Rose Tea NTD 420

Made from the strictly-selected Grand Blossom Grange' s organic roses by means of low-temperature drying, this three-dimensional tea bag keeps the most complete nutritious ingredients including rich polyphenol, flavonoid, anthocyanin, vitamins, rose tannin, and poly-saccharides.

Pilihan ketat bunga mawar organik Dahua, melalui pengeringan pada suhu rendah dibentuk menjadi kantong teh tiga dimensi. Mempertahankan nutrisi paling lengkap -- mengandung polifenol, flavonoid, anthocyanin, vitamin, tannin mawar, polisakarida dan bahan lainnya.



Rose Polyphenol NTD 1200

Powered rose polyphenol contains polyphenol, total flavonoids, and tannic acid. As anthocyanin is a natural antioxidant, one is able to enhance both metabolism and antioxidative status within the body under long-term application. It is a very healthful edible beauty product.

Polifenol bunga mawar bentuk tepung mengandung polifenol, total flavonoid dan asam tanin, anthocyanin adalah bahan anti oksidan alami, menggunakan anthocyanin dalam jangka waktu panjang bisa memperbaiki kondisi oksidan dalam tubuh, memperkuat metabolisme, adalah produk kecantikan yang dapat dimakan yang sangat sehat!

Alian District Farmer's Association of Kaohsiung City

+886-7-631-1141

No.200, Zhongshan Rd., Alian Dist., Kaohsiung City 822, Taiwan (R.O.C.)

www.alfa.org.tw

alien.fa@msa.hinet.net

Dried Jujube



NTD 160



NTD 200

Made from the jujubes produced by GAP-certified fruit tree production and marketing group by way of moisture control technology of high-temperature saccharification and concentration, Alian Zhuang dried candied dates are rich in iron, dietary fiber, pectin, and various kinds of vitamins and microelements. Having the reputation known as "the fruit of life", the jujubes can accelerate digestion, replenish vitality, and maintain beauty.

Since this low-sodium, cholesterol-free product made with pure natural dried fruits of pure nature contains neither pigment nor preservative is, it is one of the optimum choices for those who suffer from anemia.

Jujube kering Desa Alian, jujube kelas produksi dan pemasaran pohon buah yang melewati sertifikasi "Praktek Pertanian yang Baik", yang diproduksi setelah melalui sakarifikasi suhu tinggi terkonsentrasi dengan teknik pengendalian kadar air, banyak mengandung zat besi dan serat makanan, pektin, zat besi, banyak jenis vitamin dan elemen mikro, bisa membantu pencernaan, bergizi, membantu kecantikan, dikenal sebagai "buah kehidupan"; juga tidak menambah pewarna, bahan pengawet, natrium rendah, nol kolesterol, adalah buah kering alami murni, terhadap teman yang anemia merupakan satu produk baik yang alami.

Longan Honey of Dagangshan



2500g /bottle/box

NTD 1800



500gx2 bottles/box

NTD 750



700g /bottle/box

NTD 550



500g /bottle/box

NTD 400

Mount Dagan is not only one of the ten well-known mountains in Kaohsiung City but also the key production site of Taiwanese longan fruit. With its natural lime geology rich in all sorts of minerals, the longan honey it produces is particularly sweet and odorous. The plantation of longan of Mount Dagan covers an area of more than 400 hectares, and therefore the beekeeping production and marketing group of Alian District is able to produce 30,000 kilos of longan honey every year. Alian Zhuang longan honey has passed three international certifications including HACCP, ISO 22000, and Halal Certification, in accordance with Chinese National Standards (CNS) inspection.

Dagangshan adalah salah satu dari 10 gunung ternama Kaoshiung, juga merupakan tempat penling produksi longan Taiwan, kondisi tanahnya merupakan batu kapur alami, kaya akan berbagai jenis mineral, oleh karena itu madu longan yang diproduksi sangat wangi dan manis. Area penanaman longan Dagangshan permukaan luasnya lebih dari 400 hektar, oleh karena itu kelas produksi dan pemasaran pembiakan lebah Distrik Alian setiap tahun bisa memproduksi 30.000kg madu longan, dan madu longan Desa Alian melewati 3 sertifikasi internasional yaitu HACCP/ISO22000/makanan halal, menggunakan pemeriksaan standar nasional (CNS).

Lin Wang Tea Farm



+886-8-955-0699

No.55, S. 2nd Rd., Luye Township, Taitung County 955, Taiwan (R.O.C.)

a550958@yahoo.com.tw

Lin Wang Taitung Oolong Tea

75g / Bag · NTD 700
150g / Bag · NTD 1400



It is a type of oolong tea with local characteristics elaborately developed by Taitung Tea Research and Extension Station. Lin Wang Taitung Oolong Tea, whose globular outward appearance is shiny and black with vermilion orange lustrous, bright and clear soup color, is a new specialty tea of sweet, smooth, and pleasant flavor suitable for brewing with both hot and cold water.

Teh oolong berfitor lokal yang diteliti dan dikembangkan dengan hati-hati oleh situs perbaikan industri teh cabang Taitung; penampilan luarnya adalah bentuk bola, hitam dan cantik, warna air oranye kemerahan, warna sup terang, bening, bercahaya, rasanya nyaman, manis, lembut, teh berfitor baru yang juga baik bila diseduh dalam kondisi dingin dan panas.

Lin Wang Qing Xin Oolong Tea

75g / Bag · NTD 600
150g / Bag · NTD 1200



Made from the strictly-selected edible rose petals via gentle-low tumble dry, Dried Rose keeps the most complete nutritious ingredients including rich polyphenol, flavonoid, anthocyanin, vitamins, rose tannin, and poly-saccharides. Dried rose petals can be utilized in brewing tea, stewing soup, or making cake and bread.

Pilihan ketat dibuat dari kelopak mawar yang dapat dimakan, melalui pengeringan pada suhu rendah. Mempertahankan nutrisi paling lengkap -- mengandung polifenol, flavonoid, anthocyanin, vitamin, tannin mawar, polisakarida dan bahan lainnya. Kelopak yang dikeringkan bisa diaplikasikan dalam penyeduhan teh, rebusan sup, cake, roli dan produk lainnya.

Naturalism Farm



+886-8-951-5759

No.235, Ln. 915, Sec. 1, Zhiben Rd., Taitung City, Taitung County 950, Taiwan (R.O.C.)

www.naturalism.com.tw

plantation@kimo.com

NATURALISM Dried roselle

50g / Bag / Box · NTD 250



This item is made from Naturalism Farm' strictly selected Roselle flowers with a peculiar kind of gathering method. Whereas the ripe calyxes are selected and picked, the unripe ones are being left behind for allowing their continued growth. The taste of fresh, harvested Roselle flowers is sweet and long-lasting. A kilo of raw Roselle can merely produce 100-kilogram dried Roselle after the procedures of deseeding, rinsing, sun-drying, and roasting are thoroughly carried out in order. Ultimately, only about 70 kilograms of Roselle will remain for being packed as the result of screening conducted by quality control.

Produk tersebut dipilih secara ketat bunga Roselle Pertanian Naturalisme, cara panennya adalah memilih bunga yang sudah matang baru dipetik, dan meninggalkan yang belum matang supaya dia terus bertumbuh besar, bunga Roselle yang dipanen bila dimakan dengan mentah akan terasa manis. Setelah melalui pembuangan biji, pembersihan, penjemuran matahari, pemanggangan, 1kg Roselle mentah hanya bisa menghasilkan 100g Roselle kering, setelah melalui penyaringan manajemen kualitas, yang bisa dikemas menjadi kotak tersisa sekitar 70g.

NATURALISM Roselle herb tea

NTD 450



Besides being boiled with hot water, this item can be brewed directly by pouring in warm water as well. Wait for about eight to ten minutes and the cold brew, fresh and tasty Roselle-scented tea of distinctive flavor is ready to be served.

Produk tersebut selain bisa dimasak dengan panas, juga bisa dimasukkan ke dalam air hangat langsung diseduh, sekitar 8 hingga 10 menit, the Roselle dengan penyeduhan dengan air dingin bisa didapatkan, aromanya unik, menyegarkan, enak diminum.

MEMO



Taiwan Leisure Farms Development Association
3F., No.2, Ln. 23, Yangming 2nd Rd., Yilan City,
Yilan County 26057, Taiwan (R.O.C.)
886-3-9381269
www.taiwanfarm.org.tw

Taiwan Muslim Friendly Leisure Farms

Counseling Unit : Council of Agriculture, Executive Yuan
Publisher : Taiwan Leisure Farms Development Association
Chief Editor : Mr. Yu, Wen-Horng and Ms. Shiny Chiu
Editor : Mr. Ngan, Kok-Lim and Marketing Division

ADD : 3F., No. 2, Ln. 23, Yangming 2nd Rd.,
Yilan City, Yilan County, 260 Taiwan (R.O.C)
TEL : +886-3-938-1269
FAX : +886-3-938-2610

Pubication Date : Dec 2018 (First print)

Copyright Reserved

